

Interdisciplinary Senior Capstone: Anatomical Bee Model

Aaron Bobb

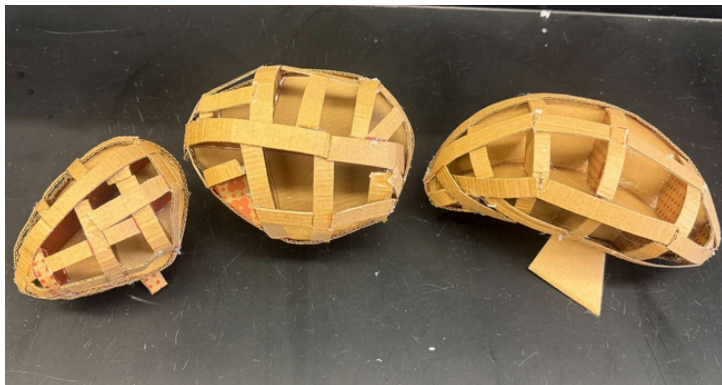
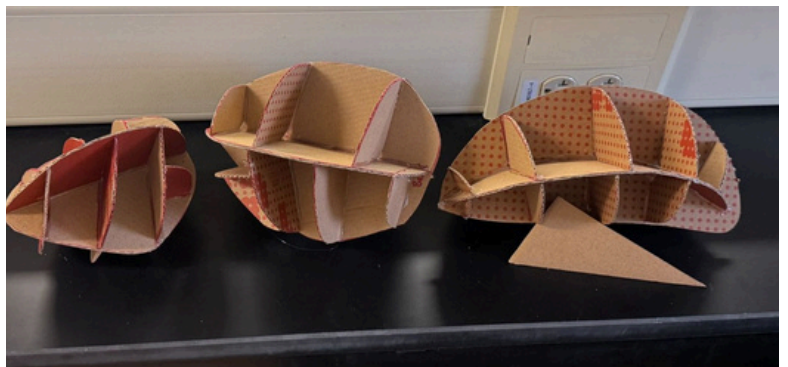
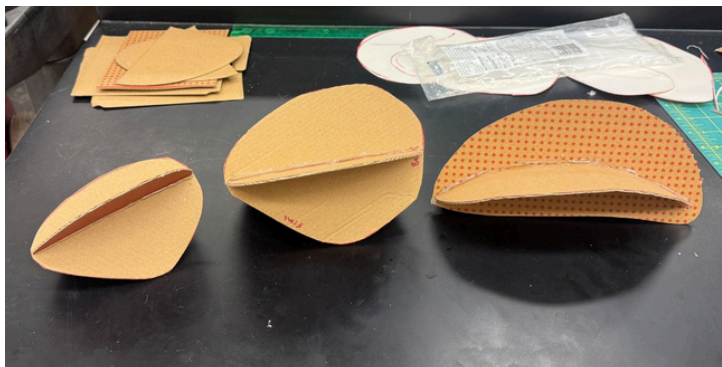
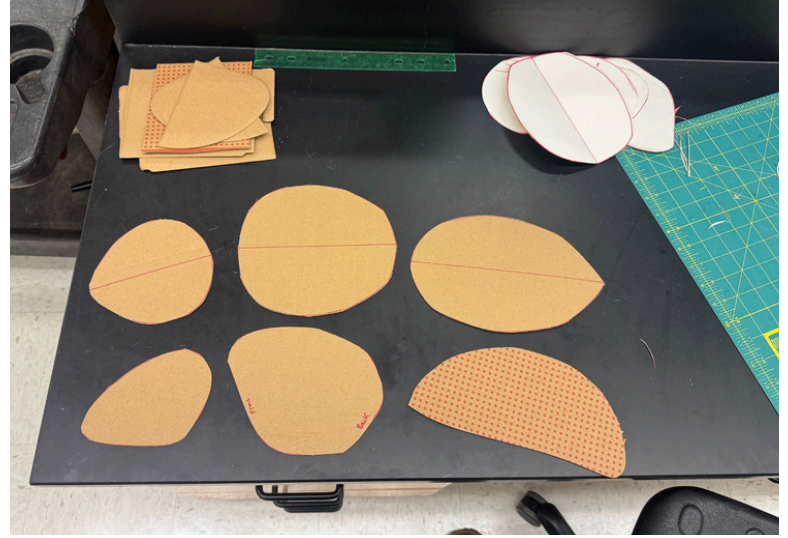
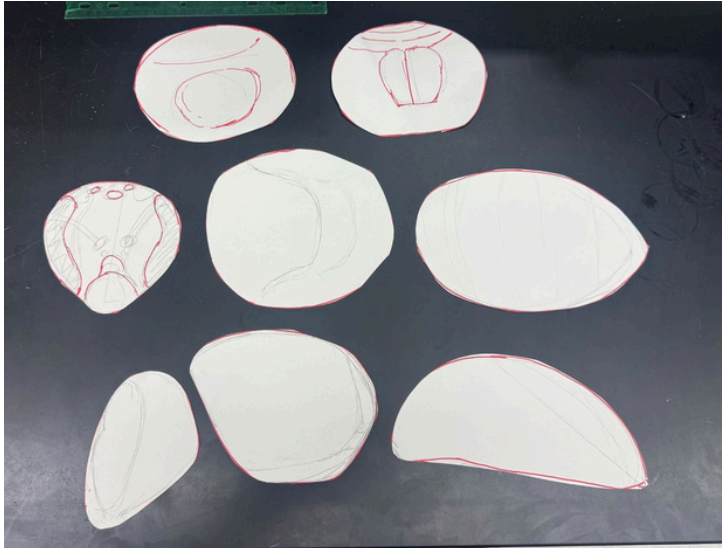
IDST 499

12/17/25

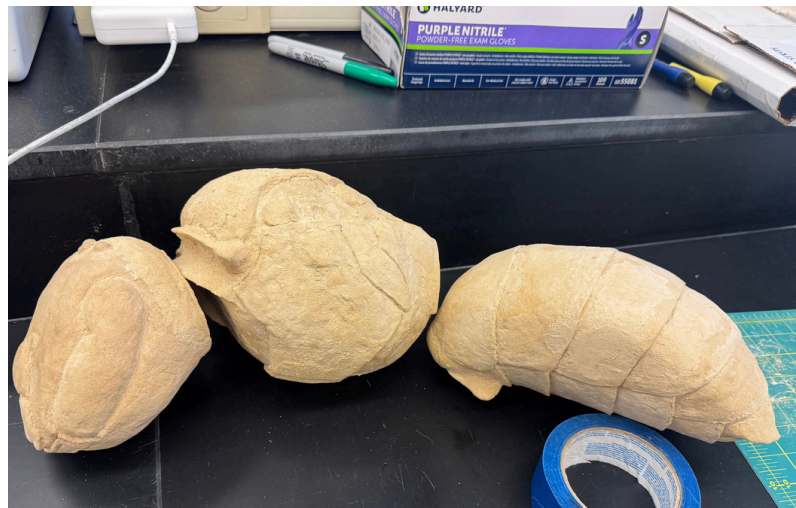
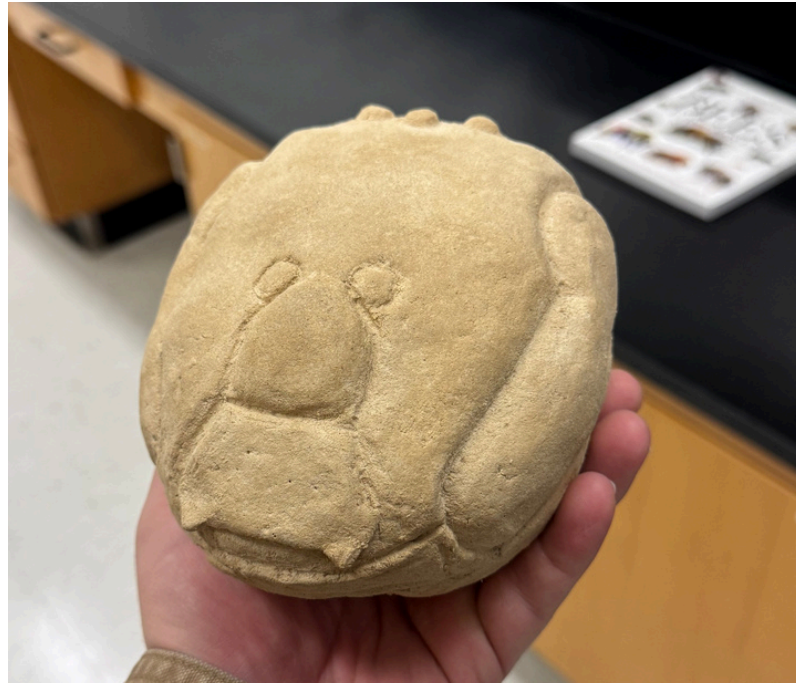
Materials Used

Cardboard, hot glue, gummed paper, wood clay, aluminum armature wire, polymer clay, expanding foam, super glue, acrylic gesso, acrylic paint, duo-chrome pigment, pine dowel, pine plank

Cardboard Armature and Surface Covering



Surface Sculpting



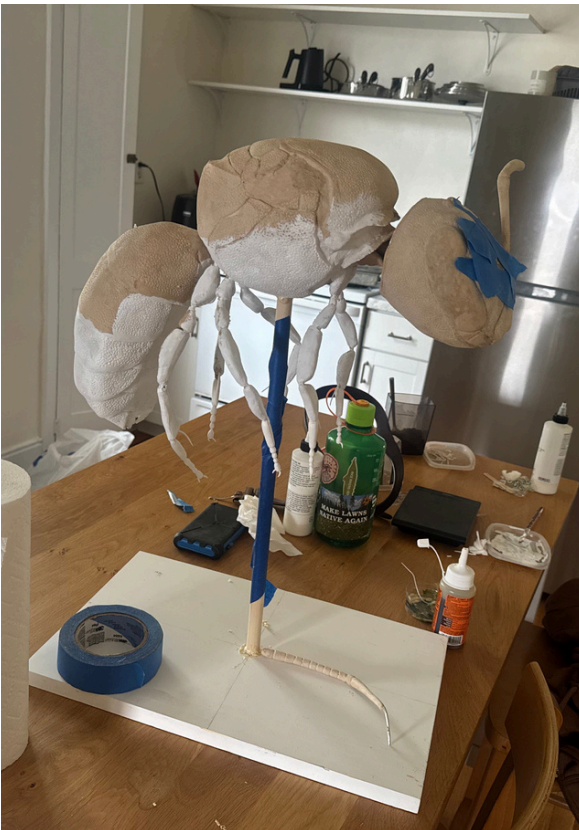
Leg and Antenna Fabrication, Assembly



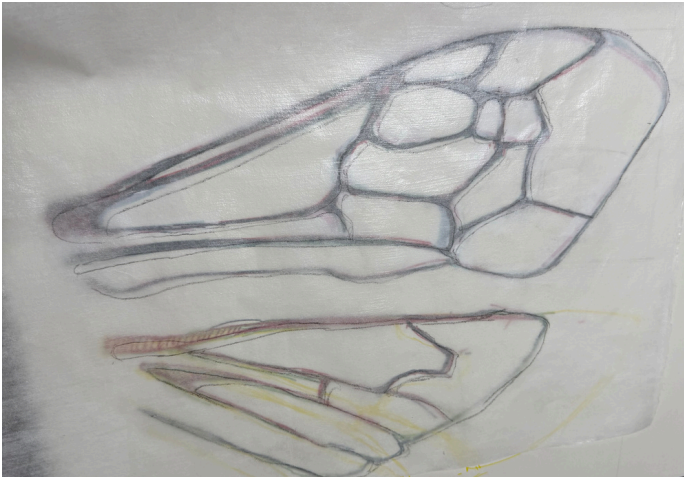
Continued Assembly



Further Assembly, Priming, and Stand



Painting and Wing Assembly



Final Product

